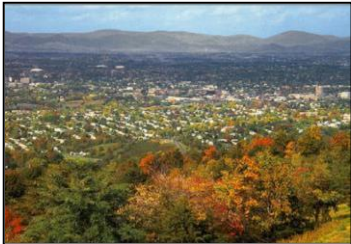


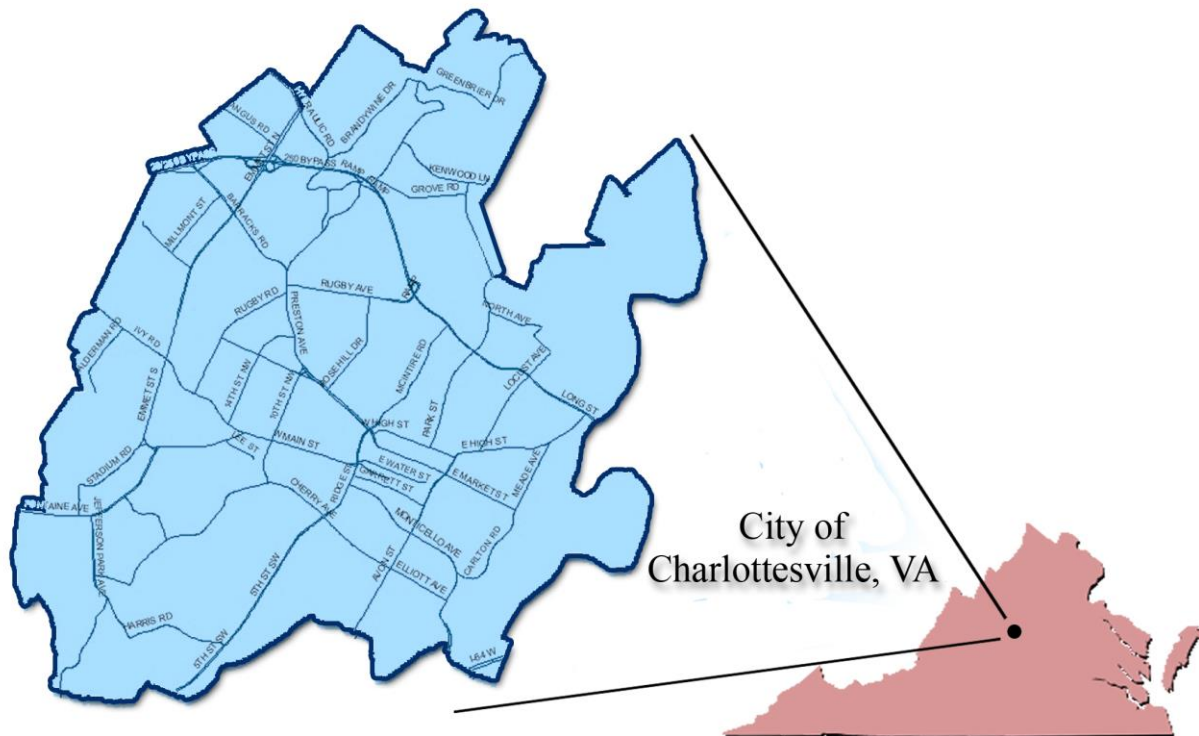
City Profile

Background

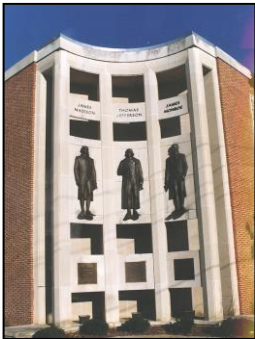
The City of Charlottesville is nestled at the foothills of the Blue Ridge Mountains in western Central Virginia and encompasses 10.4 square miles with a population of 48,210 (2015 est.) Its rich history began with the town's establishment in 1762, and it was named for Queen Charlotte, wife of King George III of England. Charlottesville was incorporated as a city in 1888.



Centrally located in the foothills of the Blue Ridge Mountains just 120 miles from the nation's capital, Washington, D.C., and 70 miles from the state capital, Richmond, Charlottesville and surrounding Albemarle County is an area rich with culture and deeply rooted in history, having been the home of three Presidents. However, Charlottesville may best be known as the home of Thomas Jefferson and his mountaintop estate Monticello, as well as the University of Virginia, founded by Jefferson in 1825 and consistently ranked one of the top public universities in the nation. Both Monticello and the University of Virginia are listed on the World Heritage Foundation list of prized cultural or natural assets, making them two of the area's top attractions. The City has earned a reputation as being one of the most livable places in the country. In 2004 the City was given the distinction by **Cities Ranked and Rated** as the **Best Place to Live in America**, and Charlottesville has consistently been listed among **Money** and **Fortune** Magazines' Best Places to Live and Best Places to Retire.



City Profile



City Government

The City operates under the Council-Manager form of government with legislative powers vested in a five-member Council. City Council members are elected at-large for four-year, staggered terms, with the Mayor and Vice-Mayor being elected from within the Council for two-year terms. Administrative and executive duties are performed by the Council-appointed City Manager. The City Manager is the Chief Executive Officer for the City and is responsible for implementing the policies and directives of the City Council throughout the various City departments and agencies, and is also charged with recommending, implementing, and monitoring policies and procedures that maintain the well-being of the City. There are

approximately 943 City full-time equivalent employees.

Business and Economy

With its small-town charm and historical setting, Charlottesville attracts new businesses each year. Charlottesville provides a strategic location for many major high-tech employers, including the largest employer, the University of Virginia, where there are approximately 15,000 University employees, 6,000 hospital employees, and 21,985 students. Other major employers in the area include Albemarle County, the Federal Government, Martha Jefferson Hospital, State Farm Insurance, and Northrup Grumman-Sperry Marine. The area also boasts a thriving wine touring and tasting business. Over 30 local vineyards make up the state's largest collection, with several wineries winning national recognition since the time Jefferson earned the title "Father of American Wine." Tourism also plays an important role in the City's economy, with much of the tourism based on the area's rich historical legacy. Approximately two million travelers visit the area each year to see its historic sites and the spectacular scenery of Central Virginia. All of this has resulted in the metropolitan area's unemployment rate being consistently one of the lowest in the country, 3.5% in March 2016 as compared to the national average of 5.1% in that month.

Sources: University of Virginia enrollment total, 2015, Bureau of Labor Statistics

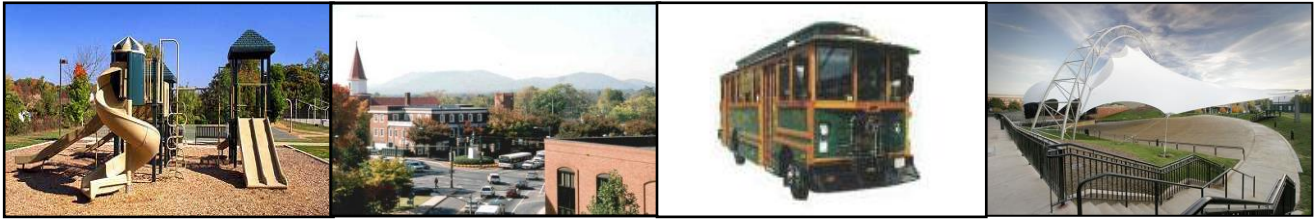
Top Ten Employers in the City of Charlottesville:

- | | |
|--|----------------------------------|
| 1) University of Virginia Medical Center | 6) Sevicelink Management Com Inc |
| 2) City of Charlottesville | 7) SNL Security LP |
| 3) UVA Health Services Foundation | 8) Atlantic Coast Athletic Club |
| 4) Charlottesville City Schools | 9) Assoc for Investment Mgmt |
| 5) Lakeland Tours | 10) Aramark Campus LLC |



Source: Virginia Employment Commission - Labor Market Information, 2/18/2016.

City Profile



Date of Incorporation	1888
Form of Government	Council-Manager
Current Population Estimate (2015)	48,210
Land Area (square miles)	10.4
Population Density (population/square mile)	4,636
Unemployment Rate (March 2016)	3.4%
Total Real Estate Property Values (2016)	\$5,982,273,300
Taxable Sales (2015)	\$959,435,496
Median Household Income (2008-2012 Census)	\$44,535
Building Permits (2015)	1,911
City School Students (2015-16 School Year)	4,323
Miles of Streets	158
Acres of Parks and Playgrounds (City and Schools)	1,018
Number of Public Libraries (includes Historical Society)	3
Number of Traffic Lights	72
Number of Streetlights	6,025
Public Utilities (number of customers)	
Gas	19,849
Water	14,652
Sewer	14,511
Number of Registered Voters (February 2016)	32,229
Bond Rating (General Obligation Bonds)	Moody's Investor Services Aaa Standard & Poor's Corporation AAA
Staffing (Full Time Equivalents):	
City	943
Schools	772

Sources:

City of Charlottesville Comprehensive Annual Financial Report for the fiscal year ending June 30, 2015; US Department of Commerce, Census Bureau; Weldon C. Cooper Center for Public Service; University of Virginia; Virginia Employment Commission

City Awards



What People Are Saying...

Folks that have lived here for a long time are aware of our City's high quality of life. Here is what some other well-known sources are saying about life in Charlottesville:

Best Place to Live

- #21 Best Places to Live (*Livability.com*, 2016)
- #43 Best College Town (*Collegevaluesonline.com*, 2015)
- #2 America's Best College Towns (*Travel and Leisure*, 2013)
- #26 out of top 100 Places to Live (*Livability.com*, 2013)
- 4th Best Place to Live in the Country (*Kiplinger's*, 2009)
- Dream Town That Has it All: Best Town to Live In (*Outside*, 2006, 2008)
- Best Places to Relocate (*Relocate America*, 2006)
- Best Place to Live in America (*Frommer's Cities Ranked and Rated*, 2004)

Healthiest City Awards

- #6 out of Top Ten Cities for Affordable Health Care (*Livability.com*, 2014)
- #6 America's Healthiest Small Cities (*Daily Finance*, 2014)
- #3 Small Community City for Overall Well-Being (*Gallup*, 2012)
- Healthiest Place to Live (*Men's Journal*, 2010)
- Top 10 Healthiest Places to Retire (*AARP*, 2008)
- #2 Healthiest Place to Live in America (*Kiplinger's Personal Finance*)
- #3 Healthiest Small City to Live in America (*Men's Journal*)

Best Place to Retire

- Top Place to Retire (*Kiplinger's*, 2010)
- #1 City for Retirement (*Kiplinger.com*, 2010)
- #2 Best Place to Retire (*Black Enterprise*, 2008)
- #1 Best Retirement City for Golfers (*Golf Digest*)

Business/Economic Awards

- #4 Best Small City for Working Women (*Nerdwallet.com*, 2013)
- #30 Best City for Job Growth (*New Geography*, 2012)

- #14 Best Performing Small Market in US (*Milken Institute*, 2011)
- #11 Best Town to Find a Job (*Forbes*, 2009)
- #9 Best Small Market for Business (*Forbes*, 2008)
- #18 Best City for Living and Launching a Business (*Forbes & Money*, 2008)
- Best Workplace for Commuters (*US Department of Transportation*, 2006)

Technological Awards

- Governor's Technology Award for IT as Efficiency Driver – Government to Citizen (2015)
- Top Ten Digital City #4 (*Center for Digital Government*, 2009)
- Best City Website (*City County Communications and Marketing Association*, Savvy Award 2006)

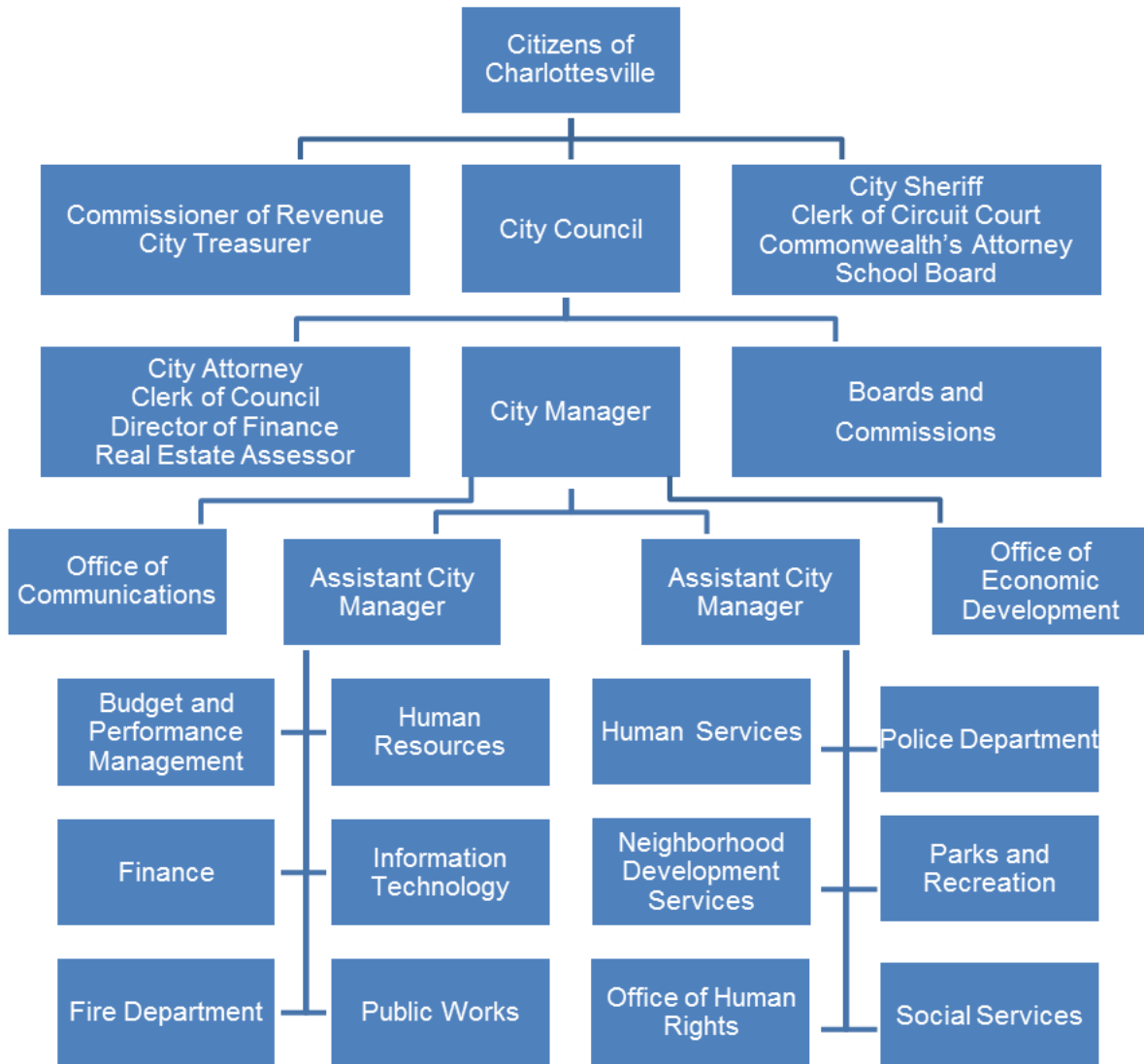
Green City Awards

- Green Government Challenge: Platinum - 2014, 2013, 2012, 2011, 2009; Gold – 2010; 1st Place (Population 15,001-90,000) – 2008 (*Virginia Municipal League*)
- Bicycle Friendly Community, Silver Level (*League of American Bicyclists*, 2012)
- Tree City USA certified for 7th year 2012; Growth Award 2010 (*Arbor Day Foundation*)
- Governor's Environmental Excellence Award, Gold and Flag Award in the Environmental Program (*Commonwealth of Virginia*, 2008)
- Outstanding Achievement for Pollution Prevention (*Chesapeake Bay Stewardship Awards*, 2007)
- Top Five Green Cities (*Blue Ridge*, 2006)

Special Recognitions

- #2 Most exciting city in Virginia (*Gogobot.com*, 2015)
- 10 Towns with Incredible Christmas Celebrations (*Fodor's*, 2015)
- #4 Most Romantic City (*Livability.com*, 2013)
- #4 Book-Loving Cities (*Livability.com*, 2013)
- #14 Cities with Most Restaurants per Capita (*Huffington Post*, 2013)
- America's Smartest City (*Lumosity.com*, 2012, 2013)
- #5 Tastiest Town in the South (*Southern Living*, 2012)
- #8 Top Beer City (*Livability.com*, 2012)
- Top "Brainiest" Metropolitan Areas (*The Atlantic*, 2010)
- Best College Football Towns (*Associated Press Readers*, 2010)
- Distinctive Destination (*National Trust for Historic Preservation*, 2007)
- Best Trail Running (*Outside*, 2006)

City Organizational Chart



Citywide Staffing (Full Time Equivalents)

<u>Department/Cost Center</u>	<u>FY 14-15</u>	<u>FY 15-16*</u>	<u>FY 16-17</u>	<u>General Fund Change</u>	<u>Non General Funds Change</u>	<u>Explanation of Changes</u>
Management						
City Council/Clerk of Council	1.00	1.00	1.50	0.50	0.00	Part-time Administrative Assistant added in FY17.
City Manager's Office/Administration and Office of Communications	9.00	9.00	11.00	2.00	0.00	Redevelopment Specialist added in FY17. 1 Long-Term Temporary employee will be converted to a Full-Time Regular employee in FY17.
City Manager's Office/Office of Economic Development	5.50	6.00	6.00	0.00	0.00	During FY16, a Project Assistant who was funded 50% by OED was moved 100% to OED from the Department of Human Services.
City Attorney	6.00	6.00	6.00	0.00	0.00	
Voting Registrar	3.00	3.00	3.00	0.00	0.00	
Total	24.50	25.00	27.50	2.50	0.00	
Internal Services						
Finance Department: Procurement/Risk Management/Warehouse	6.00	6.00	6.00	0.00	0.00	
Human Resources	8.00	8.00	8.00	0.00	0.00	
Information Technology	19.00	19.00	19.00	0.00	0.00	
Total	33.00	33.00	33.00	0.00	0.00	
Financial Services						
Commissioner of Revenue	13.00	13.00	13.00	0.00	0.00	
Finance Department: Management/City Assessor's Office/Utility Billing Office	34.00	34.00	34.00	0.00	0.00	
Treasurer	13.00	13.00	13.00	0.00	0.00	
Total	60.00	60.00	60.00	0.00	0.00	
Healthy Families & Community						
Department of Social Services	99.98	102.00	102.00	0.00	0.00	The following position changes were approved in FY16: Benefit Programs Specialist reduced from 40 hours to 20 hours per week, Reclassified a Family Services Supervisor to a Senior Family Services Specialist - hours increased from 19 to 40 per week, Reclassified a Long-Term Temporary Family Services Specialist to a Regular position, Reclassified a Long-Term Temporary Family Services Specialist to a Regular position.
Humans Services/Community Attention	35.25	35.50	35.50	0.00	0.00	During FY16, Youth Counselor position hours were increased from 32 per week to 40 per week.
Neighborhood Development Services	37.00	37.50	37.50	0.00	0.00	
Neighborhood Development Services: CDBG/HOME Grants Coordinator (Grant Funded)	0.00	0.00	0.00	0.00	0.00	
Office of Human Rights	2.00	2.00	1.50	(0.50)	0.00	The Community Outreach Specialist position will be reduced to half-time in FY17.
Parks and Recreation: Parks Maintenance	37.00	39.00	39.00	0.00	0.00	During FY16, the additional FTE reflects one new Gardener position that was necessary in order to start maintaining landscaping and turf around the Route 250 interchange and the City's portion of the John W. Warner Parkway, including areas north of Melbourne Rd. Additionally in FY16, a Construction Project Manager was reclassified and moved from Recreation and Programs to Parks Maintenance.
Parks and Recreation: Recreation and Programs	28.50	27.50	27.50	0.00	0.00	
Parks and Recreation: Golf Fund	4.00	4.00	4.00	0.00	0.00	
Total	243.73	247.50	247.00	(0.50)	0.00	

<u>Department/Cost Center</u>	<u>FY 14-15</u>	<u>FY 15-16*</u>	<u>FY 16-17</u>	<u>General</u>	<u>Non General</u>	<u>Explanation of Changes</u>
				<u>Fund</u>	<u>Funds</u>	
				<u>Change</u>	<u>Change</u>	
Infrastructure/Transportation						
Public Works: Administration, Facilities Development, Building Maintenance and HVAC	16.73	21.86	21.86	0.00	0.00	Eight new part time custodian positions were added in FY 2016 as a result of bringing previously contracted services back in-house.
Public Works: School Building Maintenance	18.28	19.28	19.28	0.00	0.00	In FY 2016, a City Schools employee retired and per the agreement between the City and the Schools, that position now becomes a City employee.
Public Works: Fleet Management	11.00	11.00	11.00	0.00	0.00	
Public Works: Public Service	51.00	51.00	51.00	0.00	0.00	
Public Works: Charlottesville Area Transit	68.00	68.00	68.00	0.00	0.00	
Public Works: Pupil Transportation	28.50	28.50	28.50	0.00	0.00	
Public Works: Utilities (Gas, Water, Wastewater)	92.00	92.00	92.00	0.00	0.00	
Public Works: Stormwater Utility	4.00	4.00	4.00	0.00	0.00	
Total	289.51	295.64	295.64	0.00	0.00	
Public Safety & Justice						
City Sheriff	11.00	11.00	11.00	0.00	0.00	
Commonwealth's Attorney	13.50	13.50	13.50	0.00	0.00	
Courts and Other Support Service	11.00	11.00	11.00	0.00	0.00	
Fire Department	91.00	91.00	91.00	0.00	0.00	
Police Department	154.00	154.00	154.00	0.00	0.00	
Total	280.50	280.50	280.50	0.00	0.00	
City-Wide Total	931.24	941.64	943.64	2.00	0.00	

* Revised from the **FY 2016 Council Adopted Budget** as a result of changes made during the fiscal year.

Note: Full Time Equivalent (FTE) refers to the number of hours an employee works. For example, a regular FTE works 40 hours per week and is counted as one FTE. A part time employee that works only 20 hours per week is counted as .5 FTE. The position totals in this budget only include **full or part time regular positions**, and NOT temporary or seasonal employees due to the turnover rate of those categories, and the fact that the numbers of these employees can vary greatly in any given year. These numbers also do not include Long Term Temporary employees who receive only partial benefits through the City.

Operational Department/City Fund Matrix

The following matrix illustrates the alignment between the City's operational departments and the City's major operational funds.



		City of Charlottesville Major Funds										
		General Fund	Social Services Fund	Human Services Fund	Information Technology Fund	Golf Fund	Transit Fund	Risk Management Fund	Warehouse Fund	Utilities Funds	Fleet Fund	CACVB Fund
City of Charlottesville Operational Departments	CITY COUNCIL/CLERK OF COUNCIL	•										
	CITY MANAGER'S OFFICE	•										
	CITY ATTORNEY	•										
	GENERAL REGISTRAR	•										
	FINANCE	•					•	•	•			
	HUMAN RESOURCES	•										
	INFORMATION TECHNOLOGY				•							
	COMMISSIONER OF REVENUE	•										
	CITY TREASURER	•										
	SOCIAL SERVICES		•									
	HUMAN SERVICES			•								
	NEIGHBORHOOD DEVELOPMENT SERVICES	•										
	OFFICE OF HUMAN RIGHTS	•										
	PARKS AND RECREATION	•				•						
	PUBLIC WORKS: ADMINISTRATION/FACILITIES DEVELOPMENT/FACILITIES MANAGEMENT	•										
	PUBLIC WORKS: CHARLOTTESVILLE AREA TRANSIT						•					
	PUBLIC WORKS: PUBLIC SERVICE/FLEET	•									•	
	PUBLIC WORKS: UTILITIES - GAS/WATER/WASTEWATER/STORMWATER									•		
	CITY SHERIFF	•										
	COMMONWEALTH'S ATTORNEY	•										
	COURTS AND OTHER SUPPORT SERVICES	•										
	FIRE DEPARTMENT	•										
	POLICE DEPARTMENT	•										
SCHOOL OPERATIONS: PUPIL TRANSPORTATION & SCHOOL BUILDING MAINTENANCE	•											
CHARLOTTESVILLE/ALBEMARLE CONVENTION AND VISITORS BUREAU (CACVB)	•										•	

Citywide Fund Balances*

	General Fund	Capital Projects Fund	Debt Service Fund	Social Services Fund	Other Governmental Funds	Total
REVENUES						
Taxes	\$ 101,869,696	\$ -	\$ -	\$ -	\$ -	\$ 101,869,696
Fees and permits	2,283,546	-	-	-	-	2,283,546
Intergovernmental	29,065,518	8,603,159	171,748	8,628,523	14,487,016	60,955,964
Charges for services	6,215,485	-	-	-	5,469,673	11,685,158
Fines	476,632	-	-	-	-	476,632
Investment earnings	349,957	-	15,113	-	-	365,070
Miscellaneous	983,498	159,475	-	38,756	749,360	1,931,089
Total revenues	141,244,332	8,762,634	186,861	8,667,279	20,706,049	179,567,155
EXPENDITURES						
Current:						
General government	15,347,670	3,098,640	-	-	-	18,446,310
Public safety	32,503,830	533,909	-	-	252,948	33,290,687
Community service	7,826,068	3,620,860	-	-	9,377,501	20,824,429
Health and welfare	4,968,583	-	-	12,096,375	14,253,614	31,318,572
Parks, recreation and culture	11,184,835	857,028	-	-	110,394	12,152,257
Education	45,347,576	1,651,690	-	-	-	46,999,266
Conservation and development	4,878,578	2,866,843	-	-	1,183,472	8,928,893
Other activities	1,052,618	-	-	-	-	1,052,618
Debt service:						
Retirement of principal	-	-	6,084,318	-	-	6,084,318
Interest	-	-	2,660,459	-	-	2,660,459
Miscellaneous	-	-	384,966	-	-	384,966
Capital outlay	-	11,713,606	-	-	-	11,713,606
Total expenditures	123,109,758	24,342,576	9,129,743	12,096,375	25,177,929	193,856,381
Revenues over (under) expenditures	18,134,574	(15,579,942)	(8,942,882)	(3,429,096)	(4,471,880)	(14,289,226)
OTHER FINANCING SOURCES (USES)						
Transfers in	5,833,457	6,706,698	8,562,977	3,214,736	4,741,777	29,059,645
Transfers out	(22,301,551)	(519,492)	-	-	(59,705)	(22,880,748)
Issuance of debt	-	11,405,000	-	-	-	11,405,000
Refunding bonds issued	-	-	11,663,366	-	-	11,663,366
Premium on issuance of debt	-	709,753	1,551,371	-	-	2,261,124
Payment to refunding bond escrow agent	-	-	(13,096,411)	-	-	(13,096,411)
Sale of capital assets	-	312,782	-	-	-	312,782
Total other financing sources (uses)	(16,468,094)	18,614,741	8,681,303	3,214,736	4,682,072	18,724,758
Net change in fund balance	1,666,480	3,034,799	(261,579)	(214,360)	210,192	4,435,532
FUND BALANCE - JULY 1, 2014	38,807,814	8,242,931	11,867,980	358,324	1,856,507	61,133,556
FUND BALANCE - JUNE 30, 2015	\$ 40,474,294	\$ 11,277,730	\$ 11,606,401	\$ 143,964	\$ 2,066,699	\$ 65,569,088

* Virginia State law requires that all local operating budgets be presented as balanced. Therefore there will be no projected change in the fund balances for Fiscal Years 2016 and 2017, which would use budgeted figures instead of actual figures.

Fund Balance Change Analysis

The Capital Projects Fund balance experienced an increase of 36.82%. The City of Charlottesville budgets for, and accumulates, funding for some of the larger projects over multiple fiscal years. Some of these projects were not scheduled to come to fruition in FY 15, therefore increasing the accumulation of capital funds, resulting in an increase to the overall fund balance amount.

The Other Governmental Funds, which includes the Transit, CDBG, Human Services, CSA, and Grants funds, experienced an 11.32% increase. Two of these funds saw increases - Human Services (\$172,513) and Grants funds (\$49,259). Human Services increase was due to the expenses of the OAR Coming Home to Work and Bank On programs expending less than 50%, and repair and maintenance savings in the Community Attention Foster Families program. The Grants fund increase was due to timing differences of when revenues for certain grants were received and expenses actually incurred.

The decrease in the Social Services fund balance was due to an anticipated one-time capital expense for an office suite relocation and remodel.