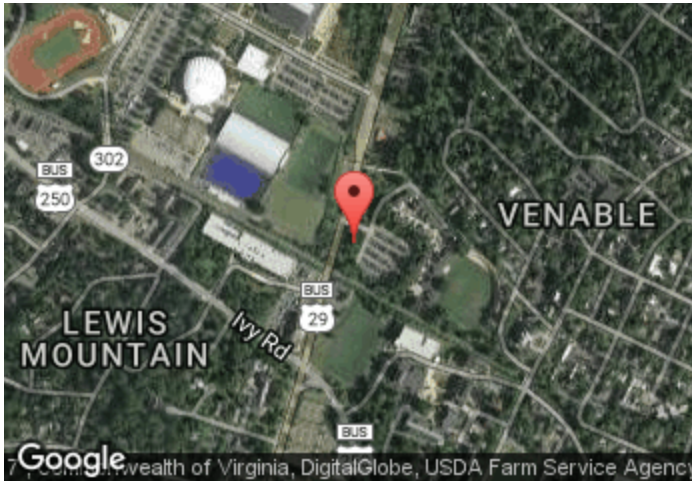


## Ped 1 -- Emmet NB

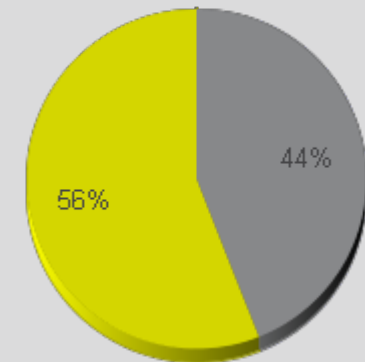
Period Analyzed: Thursday, September 22, 2016 to Monday, January 09, 2017



### Key Figures

- Total Traffic for the Period Analyzed: 47,187
- Daily Average: 429  
Weekdays: 450 / Weekend days: 378
- Monthly Average: 3,003
- Busiest Day of the Week: Friday
- Busiest Days of the Period Analyzed:
  1. Saturday, November 12, 2016 (2,427)
  2. Sunday, November 13, 2016 (1,973)
  3. Friday, November 11, 2016 (1,928)
- Distribution by Direction:

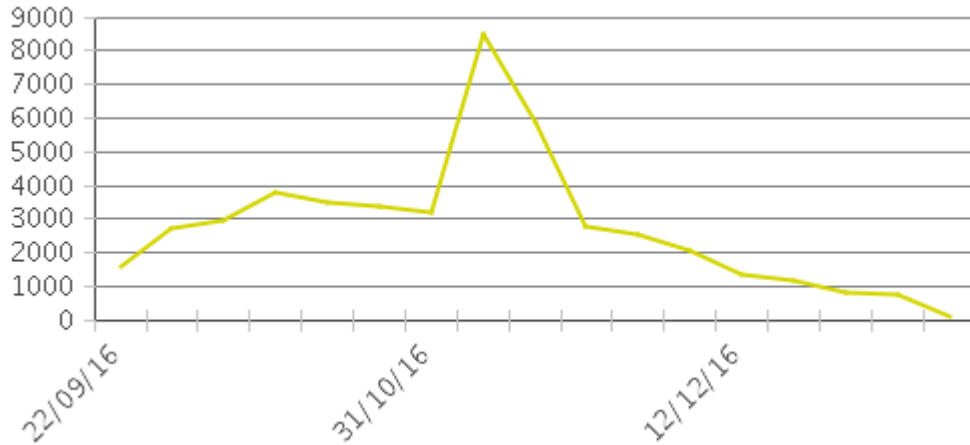
- Channel 1 SB: 56%
- Channel 2 NB: 44%



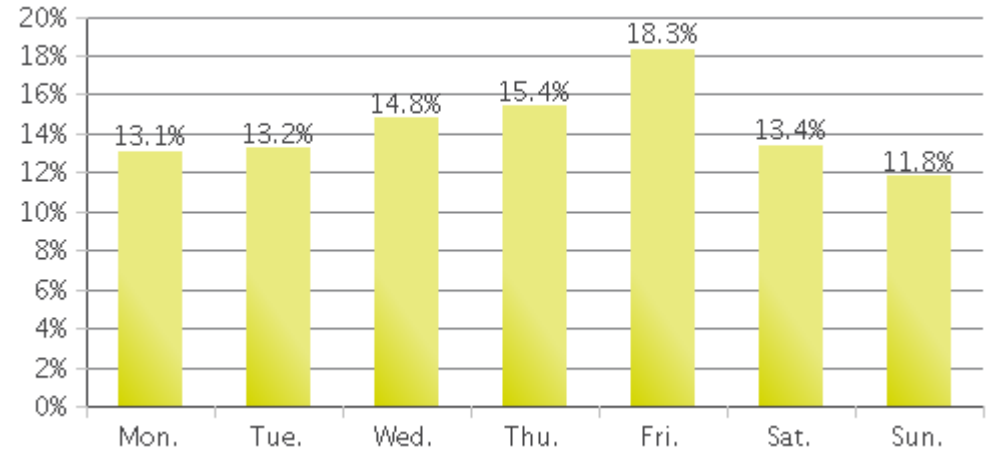
# Ped 1 -- Emmet NB

Period Analyzed: Thursday, September 22, 2016 to Monday, January 09, 2017

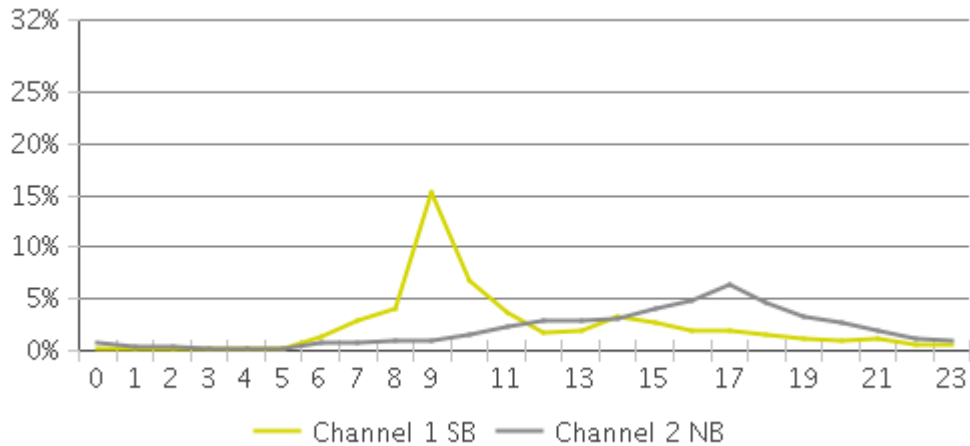
### Weekly Traffic



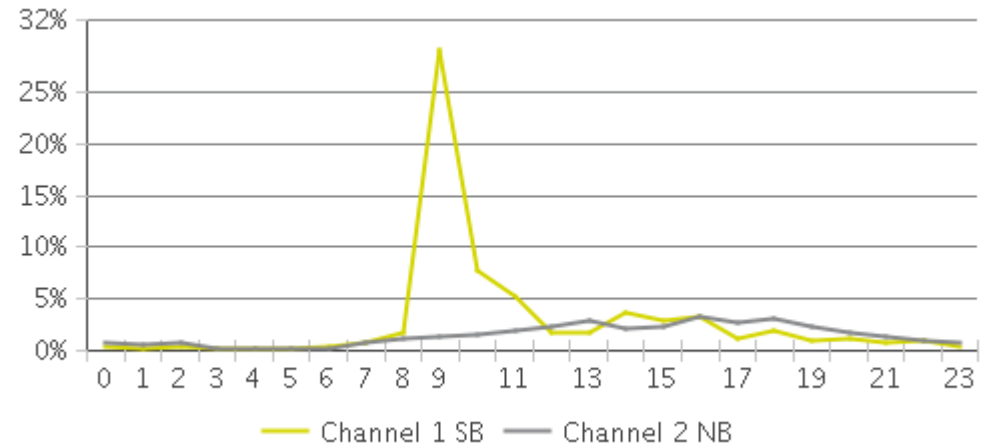
### Weekly Profile



### Hourly Profile during Weekdays

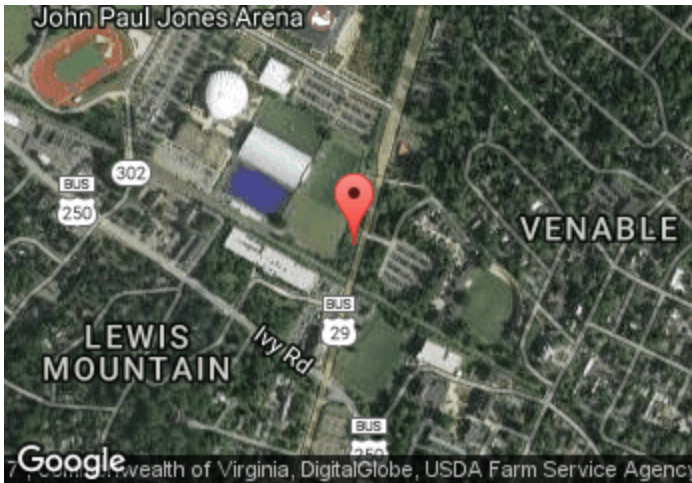


### Hourly Profile during the Weekend



## Ped 2 -- Emmet SB

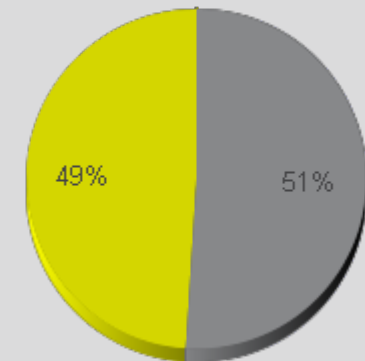
Period Analyzed: Thursday, September 22, 2016 to Monday, January 09, 2017



### Key Figures

- Total Traffic for the Period Analyzed: 56,641
- Daily Average: 515  
Weekdays: 445 / Weekend days: 686
- Monthly Average: 3,604
- Busiest Day of the Week: Saturday
- Busiest Days of the Period Analyzed:
  1. Saturday, October 22, 2016 (2,493)
  2. Saturday, December 03, 2016 (2,171)
  3. Sunday, November 20, 2016 (2,132)
- Distribution by Direction:

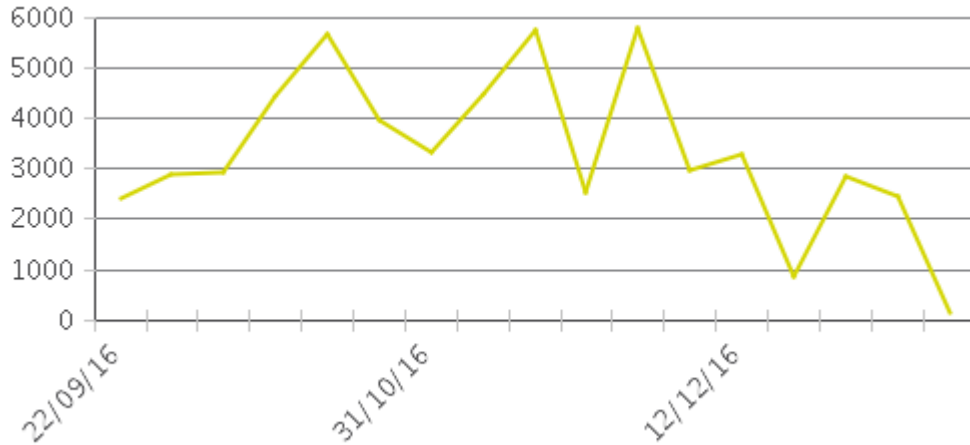
- Channel 1 NB: 49%
- Channel 2 SB: 51%



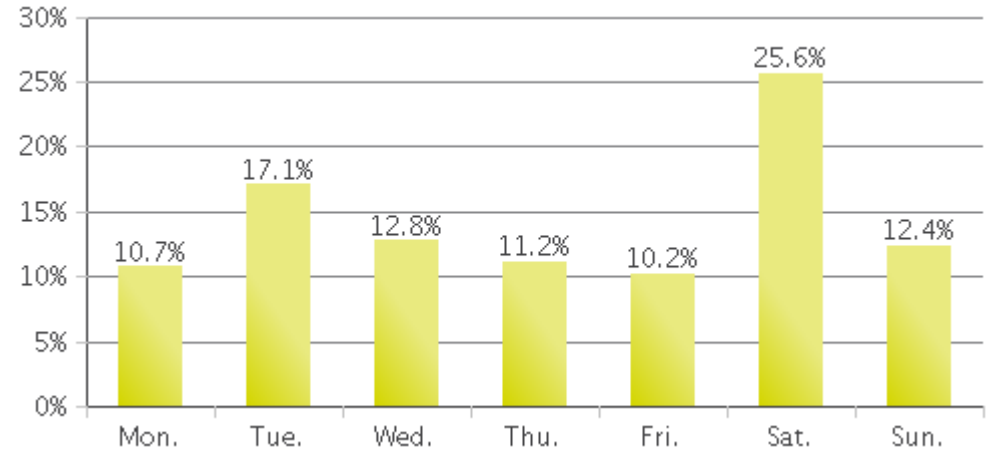
# Ped 2 -- Emmet SB

Period Analyzed: Thursday, September 22, 2016 to Monday, January 09, 2017

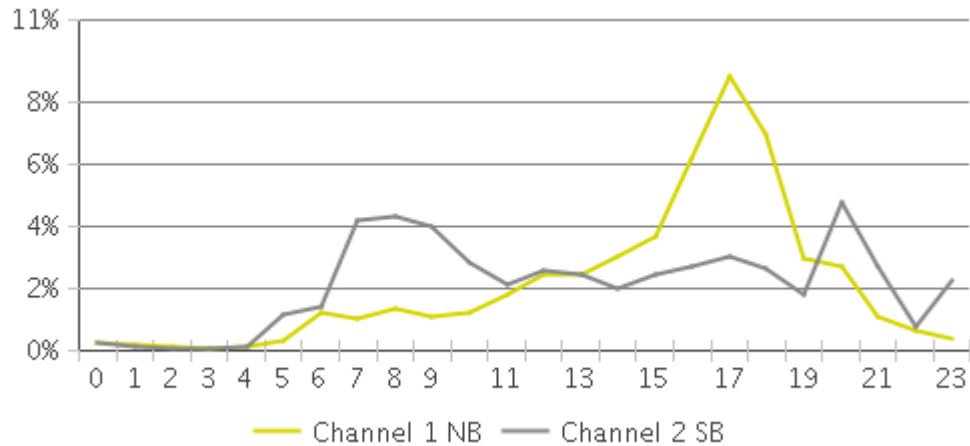
### Weekly Traffic



### Weekly Profile



### Hourly Profile during Weekdays



### Hourly Profile during the Weekend

