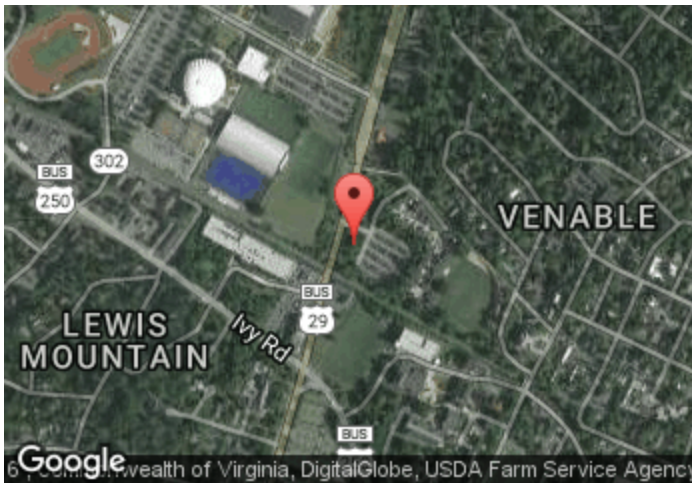


Ped 1 -- Emmet NB

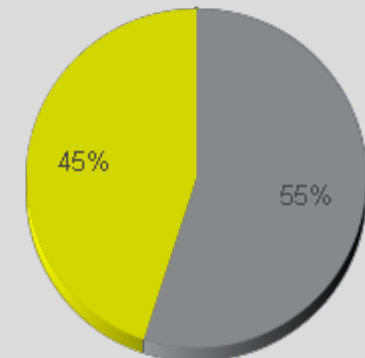
Period Analyzed: Wednesday July 27, 2016 to Wednesday September 14, 2016



Key Figures

- Total Traffic for the Period Analyzed: 18,359
- Daily Average : 367
Weekdays : 414 / Weekend days : 246
- Busiest Day of the Week : Tuesday
- Busiest Days of the Period Analyzed:
 1. Monday August 22, 2016 (887)
 2. Tuesday August 23, 2016 (869)
 3. Thursday August 25, 2016 (780)
- Distribution by Direction:

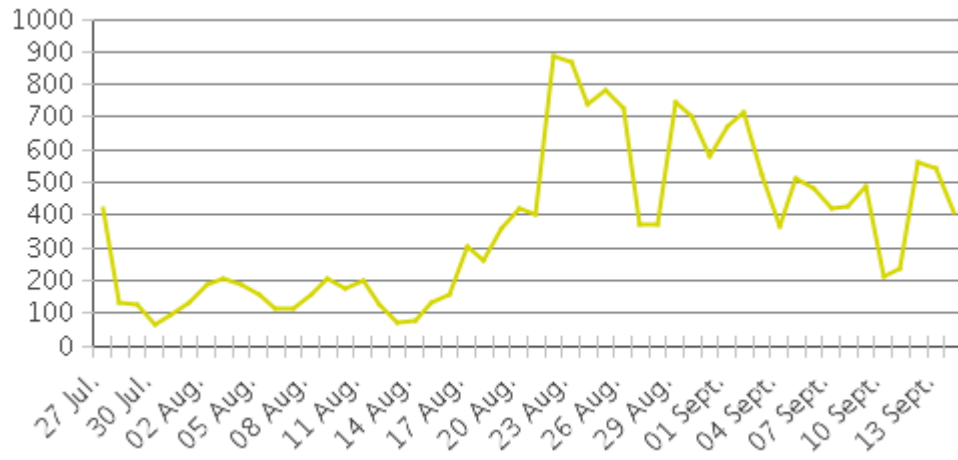
- Channel 1 SB : 45%
- Channel 2 NB : 55%



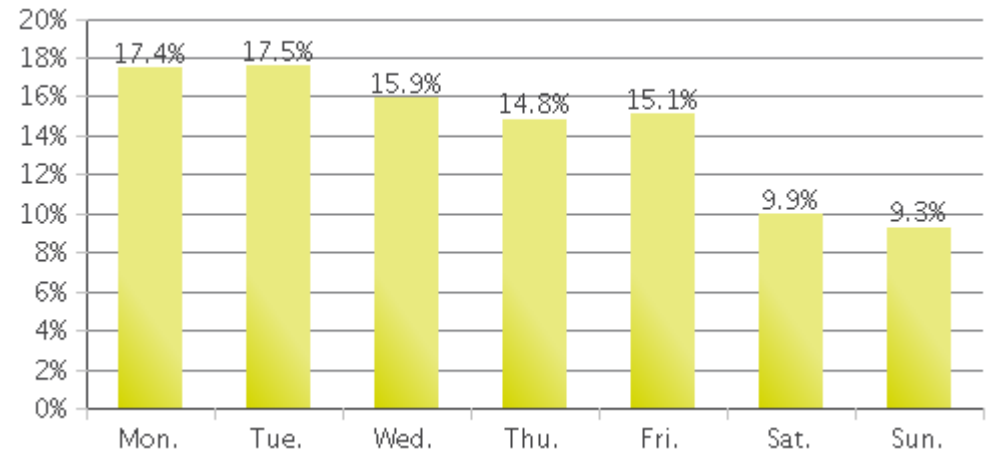
Ped 1 -- Emmet NB

Period Analyzed: Wednesday July 27, 2016 to Wednesday September 14, 2016

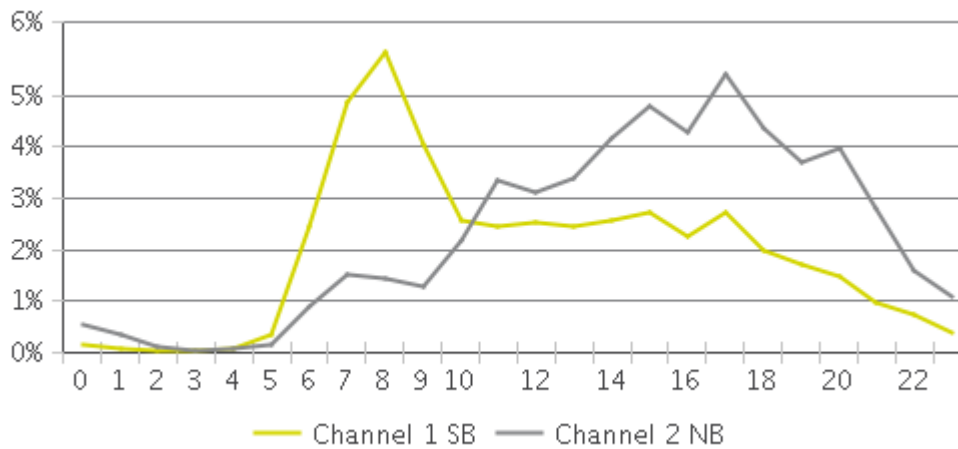
Daily Data



Weekly Profile



Hourly Profile during Weekdays

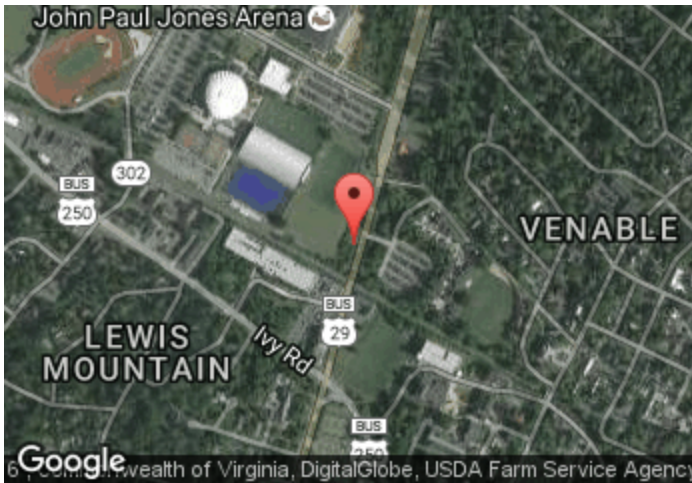


Hourly Profile during the Weekend



Ped 2 -- Emmet SB

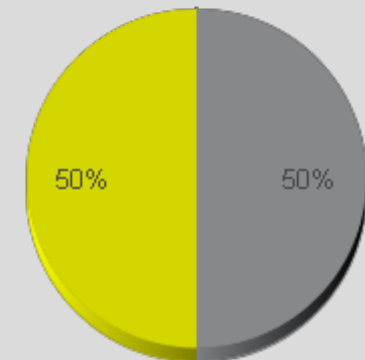
Period Analyzed: Wednesday July 27, 2016 to Wednesday September 14, 2016



Key Figures

- Total Traffic for the Period Analyzed: 23,928
- Daily Average : 479
 - Weekdays : 481 / Weekend days : 471
- Busiest Day of the Week : Monday
- Busiest Days of the Period Analyzed:
 1. Monday August 22, 2016 (2,068)
 2. Saturday September 03, 2016 (1,758)
 3. Saturday August 20, 2016 (1,599)
- Distribution by Direction:

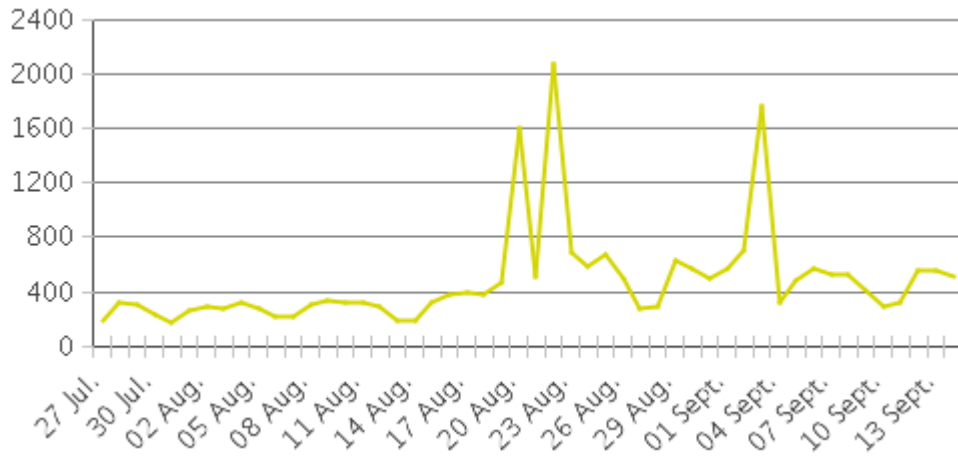
- Channel 1 NB : 50%
- Channel 2 SB : 50%



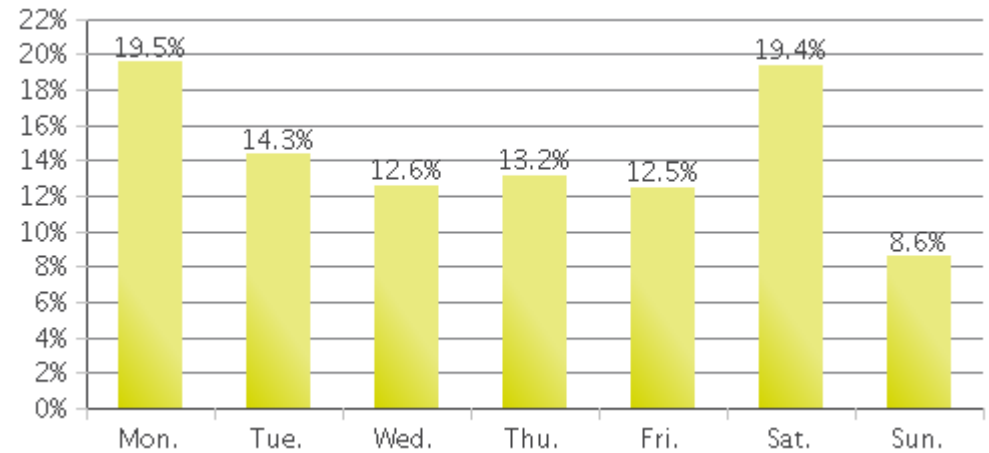
Ped 2 -- Emmet SB

Period Analyzed: Wednesday July 27, 2016 to Wednesday September 14, 2016

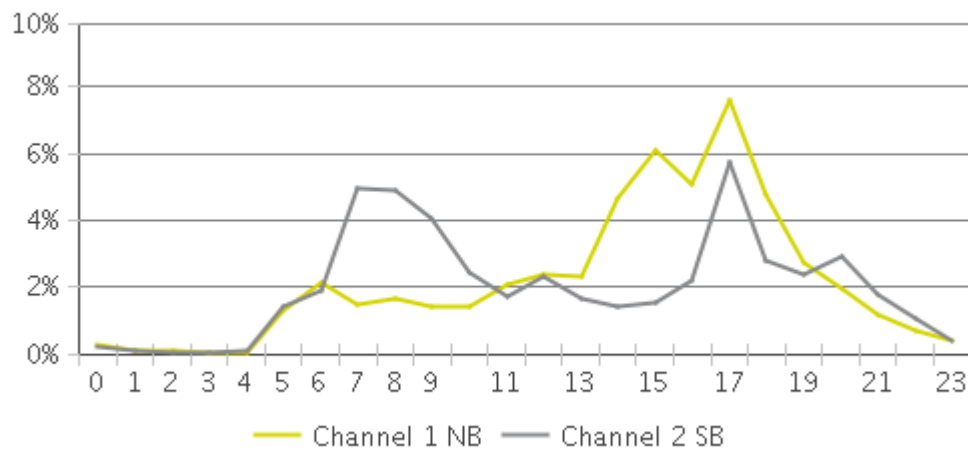
Daily Data



Weekly Profile



Hourly Profile during Weekdays



Hourly Profile during the Weekend

